



Importing Tabular Data into Protogrid

Protogrid supports the import of CSV files into TableViews. In order to make your data compatible, a few preliminary steps as outlined below are necessary before the import. In this document we assume that you work with Microsoft Excel, however any spreadsheet software or even text editor with UTF-8 support is suitable for this task.

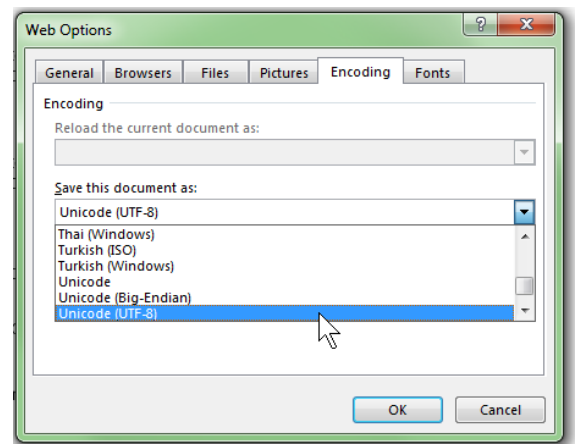
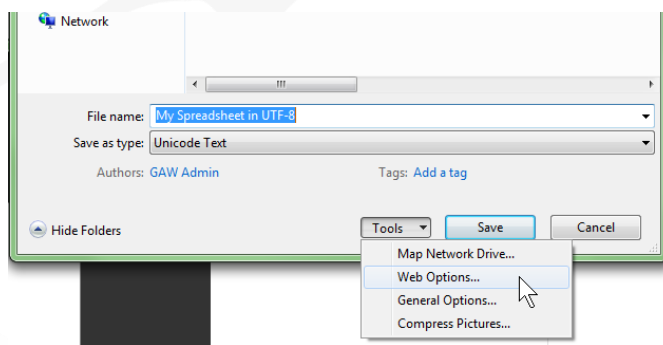
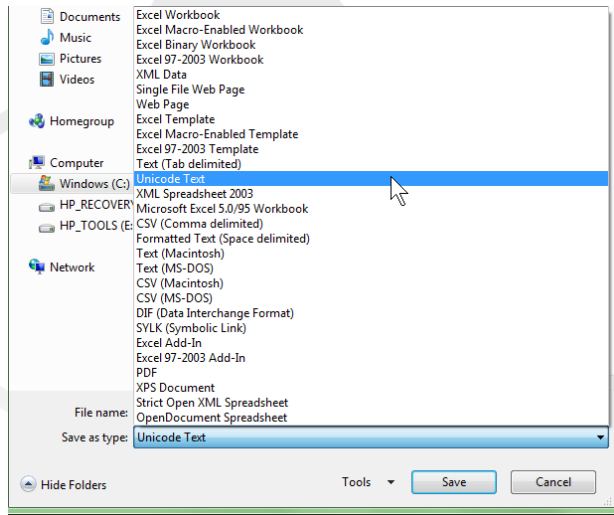
Preparing Your Spreadsheet

1. The first row of your spreadsheet should contain the field (column) names according to your current language setting in Protogrid. You may leave out non-mandatory fields, however the field names need to match exactly what you have in your spreadsheet. Any order is acceptable, i.e. it does not need to follow what you see in your Protogrid TableView.
2. Make sure that for all the mandatory fields specified by the corresponding Data Proto, you don't have any empty cells in your spreadsheet column.
3. Make sure that your cells don't contain any tabulators. They may however contain commas or semicolons.
4. If you have relational columns (with foreign keys) in your spreadsheet, make sure that:
 - a. the column entries correspond to Shortnames (a short textual representation) of existing Cards for the related Proto. Please note that Protogrid computes a default Shortname for any Card, as displayed in the corresponding TableView column. You can change Shortname of a Card by using a ScriptLibrary (please have a look at the default code that is generated when creating a new ScriptLibrary).
 - b. in case of m-to-n relations, separate the column entries using the tilde ('wave dash') character (~).
5. Date and time columns need to be converted to the ISO8601 format (https://en.wikipedia.org/wiki/ISO_8601) in Excel. Use one of the following formulas:
 - a. =TEXT(A1,"yyyy-mm-ddThh:MM:ss") for American English language setting in Excel
 - b. =TEXT(A1;"jjjj-MM-TT\Thh:MM:ss") for German language setting in Excel
6. Make sure that all validation formulas get passed for your spreadsheet rows. Please note: If you are unsure, just continue with the next steps and try an import – Protogrid will display any occurring validation errors and cancel the entire import.



Exporting to the Correct Format

Protogrid's CSV import works best with Tab-separated, UTF-8 encoded CSV files. To ensure that you have this format in case you use Excel, follow the steps below (as depicted in the screenshots):



1. In the menu, choose File -> "Save As"
2. Enter a suitable Filename ending in ".csv" and choose the "Unicode Text" Filetype
3. Under Tools -> Web Options -> Encoding choose "Unicode (UTF-8)"